

Remote Controlled Lifting Frame

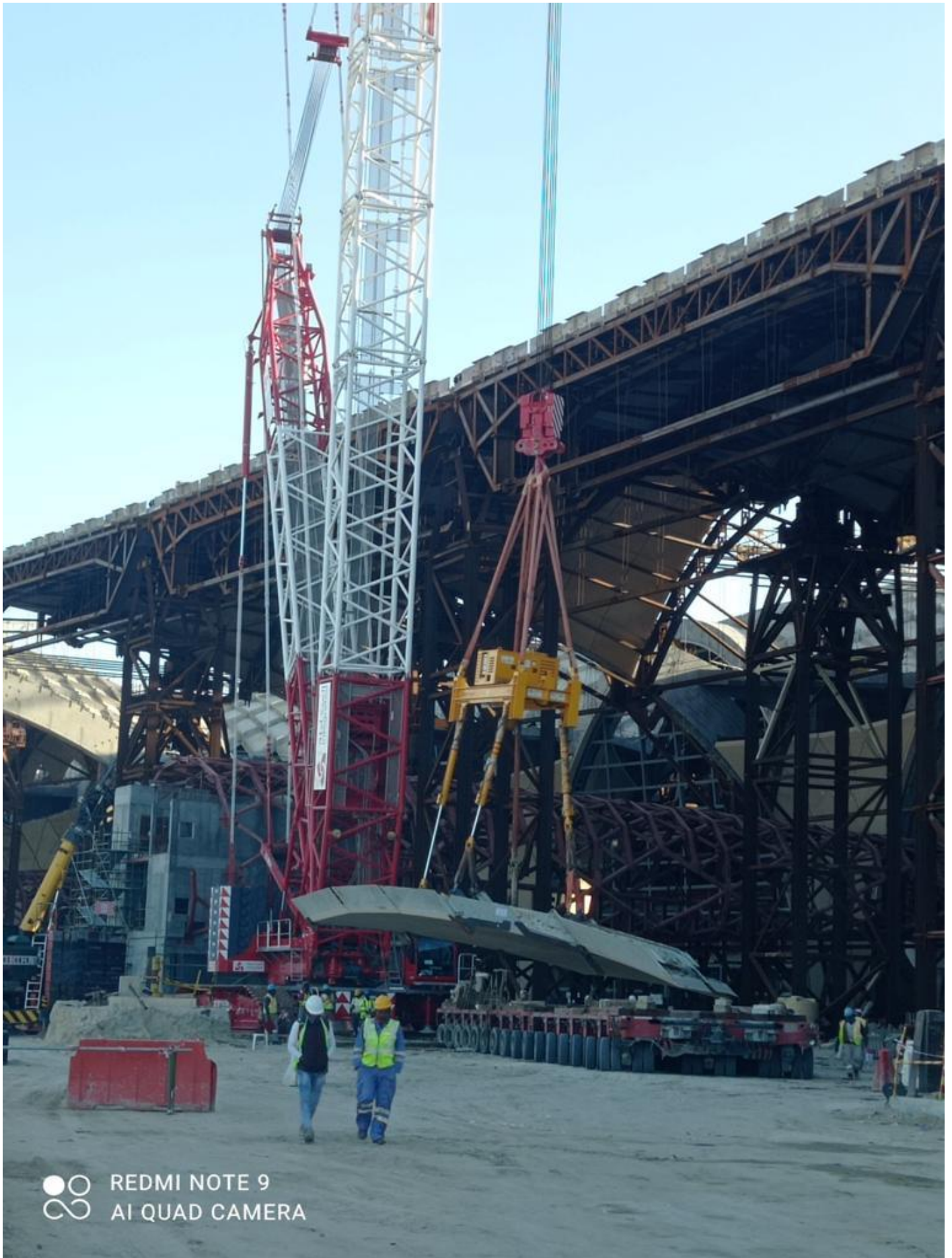
The system has a steel frame, and a power supply unit at the center on top of it. Power supply unit has a control panel, hydraulic and remote control systems. The steel frame will be lifted with four slings from upper side by the crane. At the bottom of the frame there are three hydraulic cylinders, which will lift and tilt the load proportionally and simultaneously, according to commands of the remote control system. The position of the lifting cylinders on the bottom of the frame can be change manually according to the need of lifting configuration.

Lifting Capacity	: 5-300 t
Number of Lifting Cylinders	: 3
Power Supply	: Rechargeable Battery, diesel engine or petrol engine
Remote Control	: Fully proportional hydraulic and wireless remote control system, which allows to control each axis simultaneously. Each axis high accuracy position control.
Hydraulic Pump	: Variable displacement piston pump



ALTERMEKA
ENGINEERING & TRADE CO.LTD.

Dempa Sanayi Sitesi 3792.Sokak No:32 Susuz Mahallesi Yenimahalle 06105 ANKARA TURKEY
Tel : +90.312.502 06 21 www.clever-mast.com info@altermeke.com

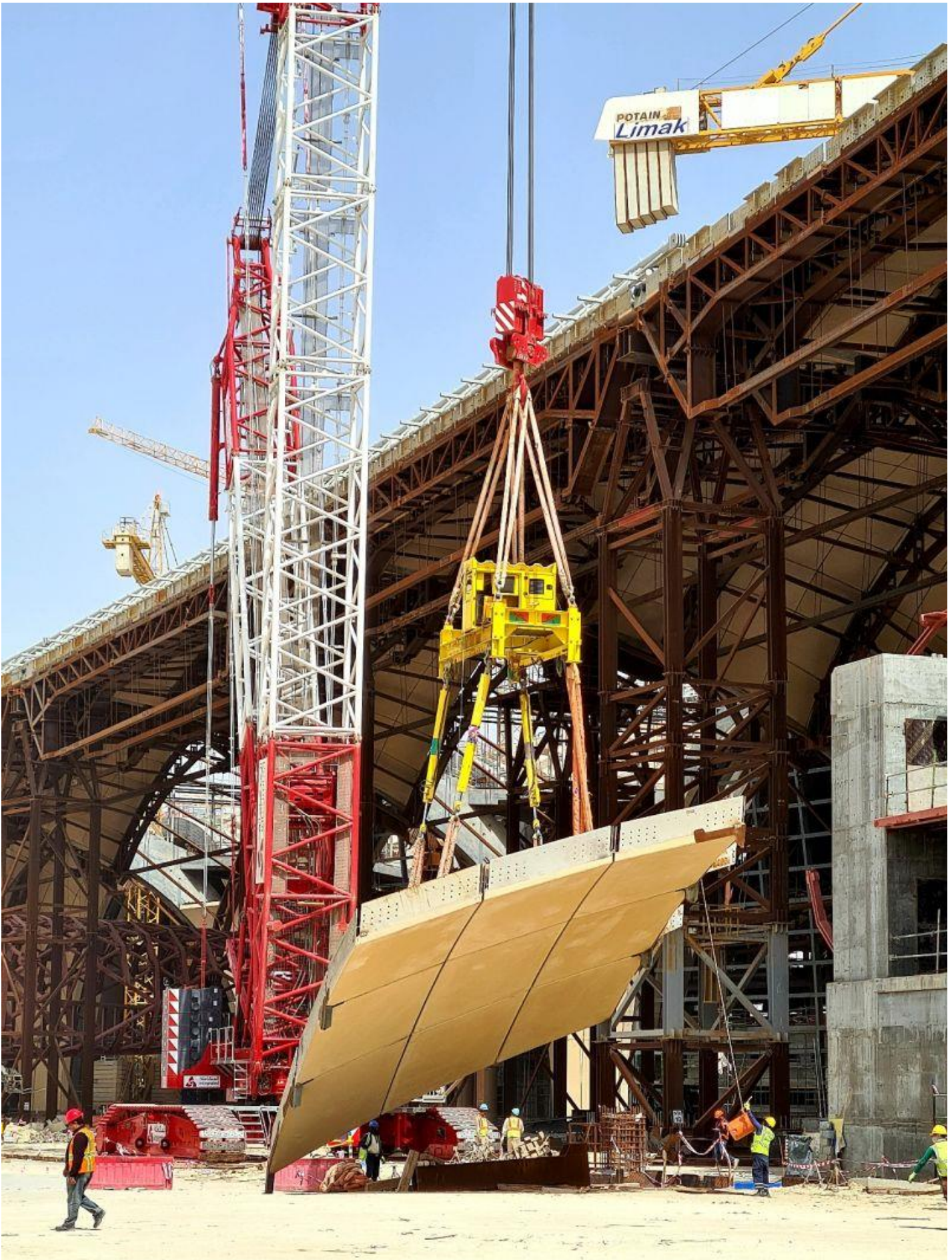


REDMI NOTE 9
AI QUAD CAMERA

ALTERMEKA

ENGINEERING & TRADE CO.LTD.

Dempa Sanayi Sitesi 3792.Sokak No:32 Susuz Mahallesi Yenimahalle 06105 ANKARA TURKEY
Tel : +90.312.502 06 21 www.clever-mast.com info@altermeke.com



ALTERMEKA
ENGINEERING & TRADE CO.LTD.

Dempe Sanayi Sitesi 3792.Sokak No:32 Susuz Mahallesi Yenimahalle 06105 ANKARA TURKEY
Tel : +90.312.502 06 21 www.clever-mast.com info@altermeke.com